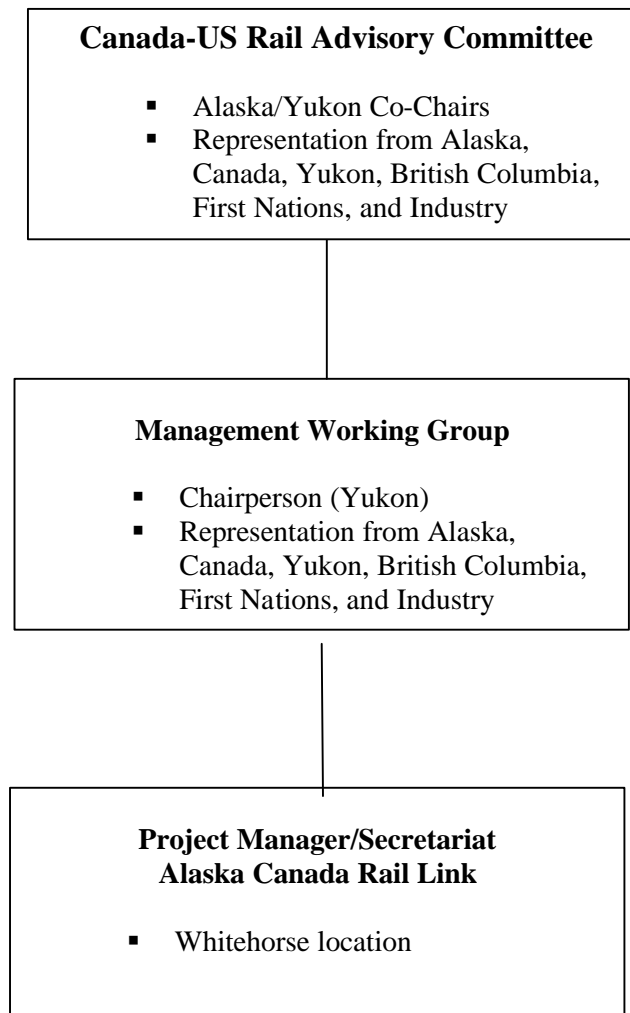


Alaska-Canada Rail Link Feasibility Study Management Structure



Canada-US Rail Advisory Committee

The Advisory Committee will serve as an oversight body to oversee and undertake the preparation of a feasibility study. The committee will report the results and recommendations jointly to the respective Canadian and United States jurisdictions.

The Advisory Committee will be made up of senior, credible individuals capable of providing strategic direction to the Management Working Group and Project Manager. Members of the Advisory Committee may be elected government officials or private citizens.

The Advisory Committee will be comprised of a total of 12 members with equal representation from USA and Canada. An interim advisory committee will be comprised of Yukon and Alaska representatives. Other jurisdictions, including Canada, British Columbia and United States will be invited to join this group.

Each jurisdiction will determine its respective appointees. There will be Co-Chairs selected from Alaska and the Yukon. It is anticipated that this group would meet at least every three (3) months or as necessary.

Management Working Group

The Management Working Group will closely monitor and direct the management of the study. It is anticipated that members will be selected from within the public service of each jurisdiction on the basis of their experience, overall project knowledge and/or technical qualifications. The group may include industry representatives that can contribute to this mandate. It is anticipated that the working group will convene at least monthly.

The Advisory Committee will be comprised of a total of 12 members with equal representation from USA and Canada. An interim working group will be comprised of Yukon and Alaska representatives. Other jurisdictions, including Canada, British Columbia and USA will be invited to join the group.

Project Manager

The Project Manager has been recruited by the interim Management Working Group in consultation with the Advisory Committee. The project manager will be devoted full time to this project. This person, and support secretariat, will be based in Whitehorse. The bulk of the study will be carried out by contractors reporting to the project manager.